

March 3, 2023



Jackson County School District #91 (Butte Falls)

March On!

Dear Butte Falls Charter School Parents and Community Members,

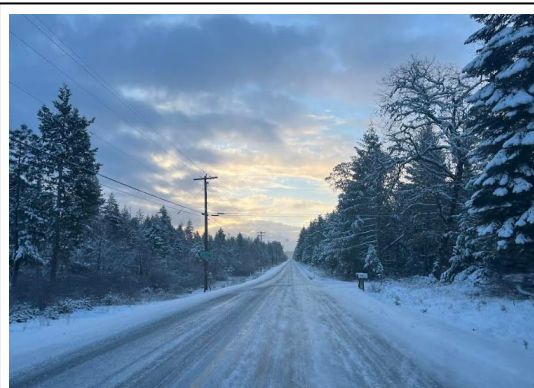
Whew! This past month has certainly given us challenges with unpredictable winter weather. Thank you to everyone for your flexibility as we work to keep school open while ensuring the safety of all. Thankfully, March holds the promise of spring and warmer days.

March 6-10 is Classified Employees Week

We want to give a big shout out “Thank You” to all of our support staff. This includes our custodians, bus drivers, educational assistants, tech support, maintenance staff, kitchen staff, and office managers. Our School Board took a few moments to acknowledge our classified colleagues at its February 13 meeting. We greatly appreciate their help in making our school work better for kids every day and are very happy to celebrate these team members during Classified Employees Week 2023!

About that Winter Weather.

I am reminded each winter of the diverse microclimates here in the Rogue Valley. In consulting with the other twelve school superintendents in the tri-county area, we all become aware of the fluctuations in forecasting that can mean the difference between a dusting of snow and 6 inches. In recent years it seems that winter storms usually show up in the early evening or the early morning. They either blanket the north end of the county or the south end or, though rarely, we get a zinger like last week that smothers the entire Valley.



02/23/23 7:27 a.m. Upper Butte Falls Hwy

While our elevation (2536 ft.) is only about 30 feet lower than our neighbor, Prospect (2566 ft.), we tend to get somewhat less snow than Prospect. On the other hand, Shady Cove (1406 ft.), Eagle Point (1310 ft.) and White City (1312 ft.) are over 1000 feet lower so an inkling of moisture and cold temperatures in those communities means we must be checking Butte Falls Hwy and arterial roads in higher elevations for black ice, if not snow accumulations. The picture to the left shows Butte Falls Hwy on a two-hour late start day. Prospect closed that day; all other districts were on a regular schedule.

Safety First, But Also School. Most of our employees live outside the Town of Butte Falls; many must drive Hwy 62 and then navigate Butte Falls Hwy to get to work. The Butte Falls Hwy is also the primary route for over half of our students. We have our own fleet of well-maintained buses with automatic chains (should we need them) and well-trained, experienced bus drivers who are very familiar with the potential icy areas along our bus routes. If we run our buses it is because we believe we can keep every bus rider safe coming to school and returning home.

Communication: How We try to Roll!

Please know the following:

- (1) We have friends who live in Butte Falls and along the major routes who keep us informed of emerging road and school campus conditions. It is not a perfect science but our attempt is to keep school open as much as possible. Our families depend on having students in school so parents can go to work.
- (2) We consult regularly with the National Weather Service and monitor weather daily throughout the winter months.
- (3) We try to make 2-Hour Late Start decisions by no later than 5:45 a.m. and Closure decisions by no later than 7:45 a.m. If we can call these earlier we will. It depends on when we can make our best weather calculation in the morning.
- (4) We use an automated communication phone, text, and email service to communicate with families about weather-related schedule changes. Except for the occasional glitch, we post Late-Start or Closure information on our website and our Facebook page. We also notify major media outlets, though we have no control over when they begin broadcasting the information.
- (5) If we bring students to school, we plan to keep them the rest of the regular school day. We recognize the stress on parents of having to leave work early because of an unanticipated early release. We also are not comfortable dropping students at bus stops at unscheduled times. Parents may always come and pick up their students early if they want them home due to an arriving winter storm.
- (6) If we have to cancel afterschool activities, we try to make that decision by 2:30 p.m. at the latest.
- (7) We always plan to have a meal for students. It is not possible for us to serve breakfast when we open two hours late, but lunch is always available thanks to our excellent on-site cooking/baking staff.
- (8) We want to know if your family is snowed in and can't get to school. Please call and let our Office Managers know. (541-865-3563: Option 1 for secondary campus, Option 2 for elementary campus)



If you have any additional questions regarding school closure decisions or processes, please email us at Feedback@buttefalls.k12.or.us. Safety First; then School.

Middle School Girls complete Winter Basketball Season; Wrestlers Grapple with Competition.

Our Middle School Girls Basketball team persevered through a busy winter schedule. They competed in the Southern Oregon Middle School Athletic Conference (SOMSAC) season. We appreciate the commitment by Head Coach Billie Jean Myers and Assistant Coach Bonnie Freeman along with the patient support of our players' families.

We are also thankful to our small but mighty contingent of wrestlers. While we were unable to host any meets, our wrestlers competed across the region. Thank you, to High School Coach Jason Haskell and Middle School Coach Ted Birdseye! Congratulations to our wrestlers who grew in knowledge, skills, and toughness! We thank all families and patrons who turned out to cheer on our athletes.

Stay Calm and Ping Pong

Friday, February 24, was our first Snow Makeup Day. That allowed us to (1) make up classes missed due to school closure earlier in the month, (2) hold our Monthly HS Assembly and (3) move forward with Colby Terrell's Ping Pong Tournament Fundraiser for his Senior Project. Eleven teams laid down the \$4 entry fee and competed in the double elimination tournament. After 90 minutes of hard-fought paddle flailing, Team Carrigan/Dufresne emerged as 2023 Grand Champions!



Seniors v. Sophomores: Mercy is a cold dish served sparingly in Table Tennis!



Mr. Carrigan and Mr. Dufresne were Fearlessly Unflinching Champions!



No Love Lost as Mr. DeCarlow and Mr. Bowers meet their Ninth-Grade Nemesis!

Parent Involvement Group Meets Regularly

We are happy to advertise that the next meeting of our Parent Involvement Group (Affectionately called PIG) will be this Thursday, March 9, from 4-5 in the Elementary Library. This is a great group of parents who are looking for ways to work together to support student and family involvement in our school. Check in at the front office and join together in the Library!

District/Board Listening Session reset for Monday, March 20.

It looks like we will be through the worst of winter weather and illnesses in another couple of weeks. One of the helpful meetings that occurred last year was a School District/Board Listening Session that allowed parents and patrons to come and share out-loud interests, hopes, and concerns about our school and district. We have rescheduled this for Monday, March 20, at 6:00 p.m. at the elementary campus gymnasium. Please come, if for no other reason than to talk directly with your school administrators and school board members. We welcome your participation. If you have questions, email Feedback@buttefalls.k12.or.us and let us know. Thank you.

District is completing its Integrated Grant Application Planning Process

This year the State of Oregon is requiring districts to combine the application process for a number of grants and initiatives. Per state requirements, the district will be posting application (inclusive of its plan and budget) on the district website (www.buttefalls.k12.or.us) preceding its March 13 School Board meeting.

A presentation of the application will be included on the agenda for that Board meeting. The Board will provide time after the presentation for public comment concerning the application. Comment may also be provided electronically after the presentation via Feedback@buttefalls.k12.or.us. The grant



Security Cameras picked-up this versatile employee helping out before school in late-February. Thank you, everyone, who stepped up and helped us keep our school going!

application considers the input of students, parents, staff and community members as gathered this year through surveys, public comments, small group interviews, and parent meetings.

Here are some important upcoming District dates. Please check the District News and Events at our website (www.buttefalls.k12.or.us) for any updates.

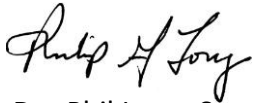
- HS Track Practice begins – Wednesday, March 1
- MS Track Practice begins – Tuesday, March 7
- Parent Involvement Group Meeting – Thursday, March 9, 4-5 p.m. (Elementary Library)
- Monthly School Board Meeting – Monday, March 13, at 6:00 p.m. (District Office)
- District Listening Session – Monday, March 20, at 6:00 p.m. (Elementary Gymnasium)
- Spring Break – Week of March 27-30 (District is closed)
- End of Third Quarter Grading Period – April 6
- Parent/Student/Teacher Spring Conferences – April 20-21

We love Sunshine but Welcome the Rain(and Snow)!

The past several years of drought have reminded us how reenergizing and significant water is for our environment. Water, like sunshine, is an essential component of life. As we push toward spring, anticipating more sunshine and the hope of new growth and greenery, please take a moment to sprinkle on us ways we can grow our school to be a better place for students and families. Reach out via Feedback@buttefalls.k12.or.us or drop a note by the school office. Your feedback helps revitalize our efforts!

Spring is coming! Our school is growing stronger and healthier. We will soon be celebrating the accomplishments of your students with them and with you. Thank you for your support and encouragement for our students and staff.

Sincerely,



Dr. Phil Long, Superintendent
From small seeds grow mighty trees!

A few other glimpses into our school life!



For students not playing in the tournament, we provided other strategic thinking challenges. (It's a pretty tricky balancing act!)



Heartfelt fun for our secondary students at the Valentine's Day Dance on Thursday, February 16. ❤️



Early evening at the High School Valentine's Day Dance. ❤️ Thank you, Town of Butte Falls, for letting us transform the Community Hall into a Dance Studio. Thank you, to staff chaperones Mrs. Brown, Mr. Bowers, Mr. DeCarlow, Mrs. Noon-Toledo, and Dr. Long. (And there was delicious food downstairs!)